

Yamaha MT-09/FZ-09

Product Name: **Racing Line (Carbon)**

Product code: **S-Y9R12-APC**

Approval: W/A



INFO

The Racing Line represents a full step in the exhaust system tuning process and offers a great balance between price and optimum performance. Racing performance exhaust systems are designed for riders that demand maximum performance from their motorcycle. The systems are lighter compared to the stock exhaust system and feature exceptional production quality and increased engine performance combined with pure racing sound output. A combination of racing materials like carbon fibre for the muffler outer sleeve give these exhaust systems a racing touch.

Exhaust system is compatible with side cases and central stand.

THIS PRODUCT DOES NOT MEET EMISSION COMPLIANCE REQUIREMENTS FOR STREET OR HIGHWAY USE.

Yamaha MT-09/FZ-09

Product Name: **Racing Line (Carbon)**

Product code: **S-Y9R12-APC**

Approval: W/A

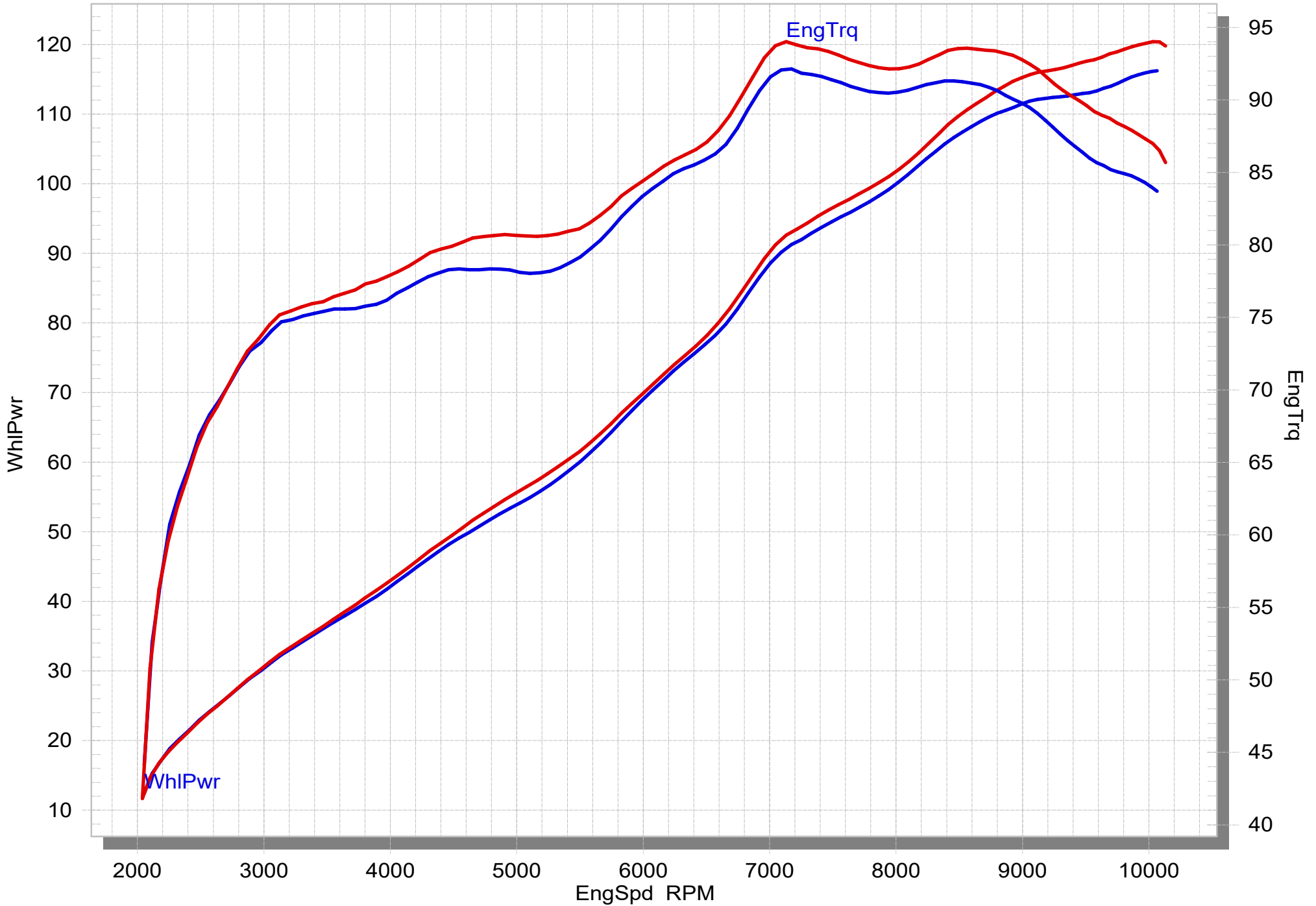
TECHNICAL DATA

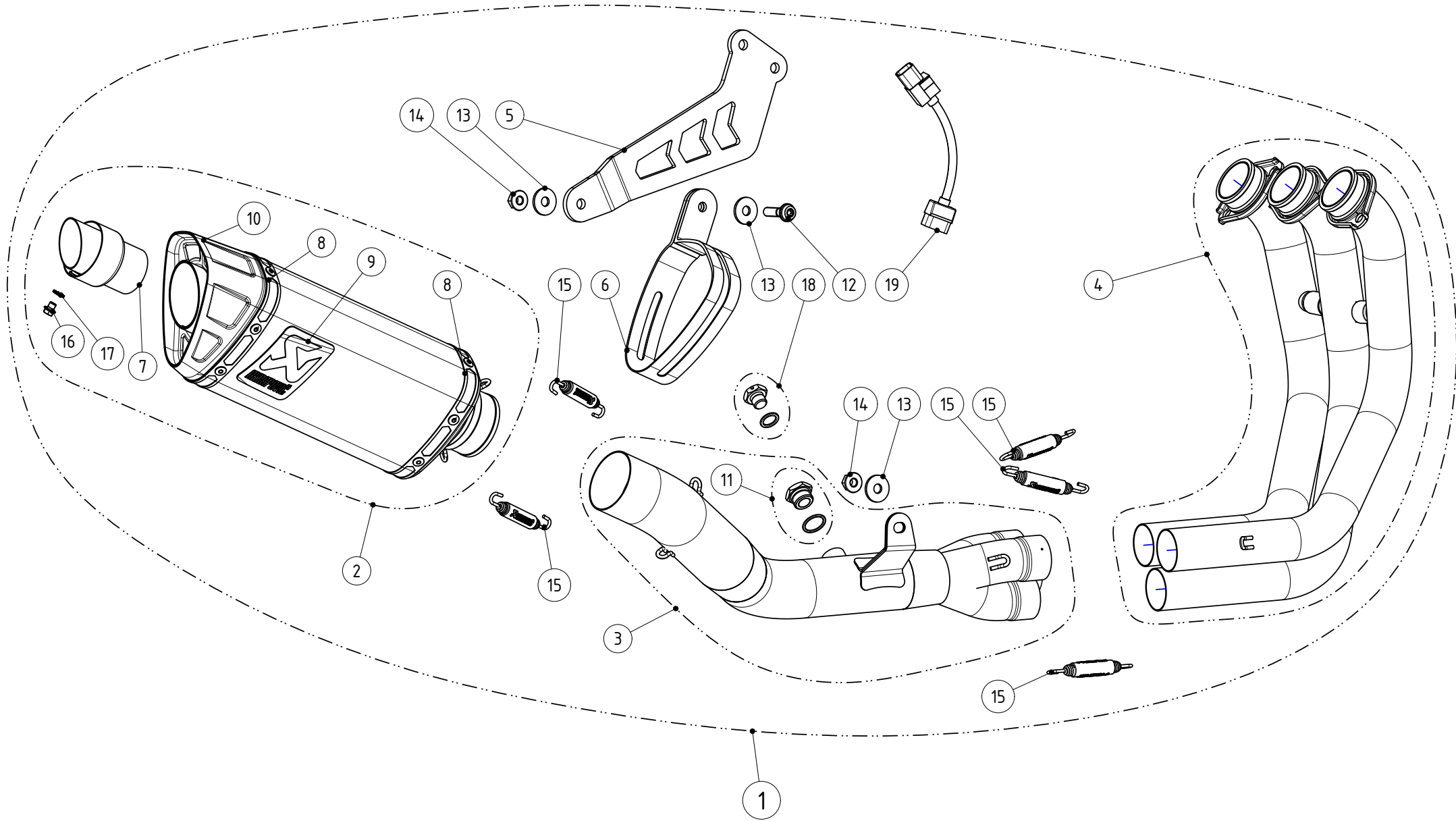
	UNIT	STOCK	AKRAPOVIČ	MAX GAIN
maximum power	kW	85.4 / 10000 rpm	88.5 / 10000 rpm	+ 3.3 / 9600 rpm
	HP (m)	116.2 / 10000 rpm	120.4 / 10000 rpm	+ 4.5 / 9600 rpm
	HP (i)	114.6 / 10000 rpm	118.7 / 10000 rpm	+ 4.4 / 9600 rpm
maximum torque	Nm	92.1 / 9650 rpm	94.0 / 7200 rpm	+ 3.4 / 9650 rpm
	lb-ft	67.9 / 7200 rpm	69.3 / 7200 rpm	+ 2.5 / 9650 rpm
weight	kg	7.0	4.5	- 2.6
	lb	15.5	9.8	- 5.7
	%			- 36.5
installation time	min		60	

YAMAHA MT-09

STOCK

RACING LINE





MUFFLER REPAIR KITS	
REPACK	20
SLEEVE	21

No.	SalesCode	Description	Qty.
1	S-Y9R12-APC	racine system	1
2	M-AP01503C	muffler	1
3	L-Y9R2	link pipe SS	1
4	H-Y9R3	header SS	1
5	P-X262	bracket AL	1
6	P-MCCAP15	muffler clamp	1
7	V-TUV177	noise reduction insert	1
8	P-TT62	titanium tape	2
9	P-VST2AL	sticker	1
10	V-EC374	end cap TI	1
11	P-LBSB4	lambda plug	1
12	P-FB167	bolt	1
13	P-DR4	washer SS	3
14	P-FN12	nut	2
15	P-S1/2	spring	5
16	P-FB86	bolt	1
17	P-DR18	washer SS	1
18	P-HF661	lambda plug	1
19	P-HF1311	connection cable	1
20	P-RPCK261	muffler repack kit	1
21	P-RKS434AP250	muffler sleeve kit	1