



## Slip-On Line (Carbon)

Product code: S-K10SO24-HRC **EC** **EPA** **CARB RP** **ECE**

Slip-Ons represent the first step in the exhaust system tuning process, and they offer a great balance between price and performance. Change the nature of your bike by adding more power, improved performance, and the unique Akrapovič sound. Everything packed in stylishly designed Slip-On exhaust systems. The result of taking design very seriously is a beautifully crafted exhaust system with a carbon fibre muffler outer sleeve and end cap. Race-proven materials.

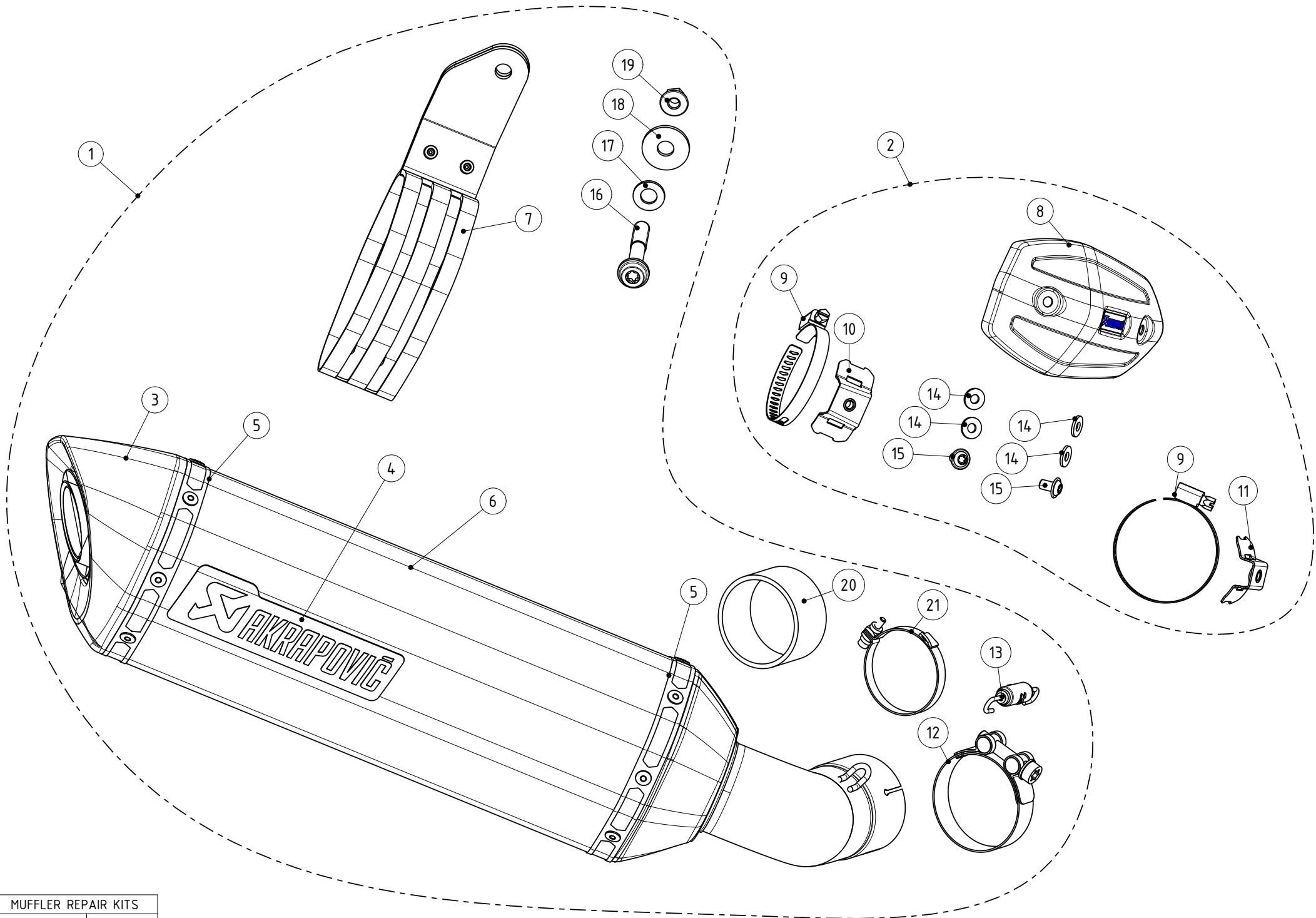
On the product image, the system is shown together with optional carbon heat shield P-HSK10SO4.

<b>TECHNICAL DATA</b>	<b>UNIT</b>	<b>STOCK</b>	<b>AKRAPOVIČ</b>	<b>MAX. GAIN</b>
maximum power	kW	97.1 at 9300 rpm	97.4 at 9390 rpm	+ 0.4 at 9600 rpm
	HP (m)	132.1 at 9300 rpm	132.4 at 9390 rpm	+ 0.6 at 9600 rpm
	HP (i)	130.3 at 9300 rpm	130.5 at 9390 rpm	+ 0.6 at 9600 rpm
maximum torque	Nm	110 at 8360 rpm	110.2 at 8350 rpm	+ 2.3 at 1860 rpm
	lb-ft	81.1 at 8360 rpm	81.3 at 8350 rpm	+ 1.7 at 1860 rpm
weight	kg	5.2	2.5	- 2.7
	lb	11.5	5.6	- 6

### Optional Parts

Product code: **Optional Header (SS)**  
 Product name: **E-K10R5**

Product code: **Heat shield (Carbon)**  
 Product name: **P-HSK10SO4**



MUFFLER REPAIR KITS	
REPACK	22
SLEEVE	23

No.	SalesCode	Description	Qty.
1	S-K10SO24-HRC	slip on system	1
2	P-HSK10SO4	heat shield CA	1
3	V-EC359	end cap	1
4	P-HST2AL	sticker	1
5	P-TT52	belt TI for SS sleeve	2
6	M-HR07202C	muffler	1
7	P-MCCR32	muffler clamp CA	1
8	P-HSK10SO4/1	heat shield CA	1
9	P-R49	clamp SS	2
10	P-X250	bracket SS	1
11	P-X251	bracket SS	1
12	P-R42	clamp SS	1
13	P-S2/1	spring	1
14	P-DR154	washer	4
15	P-FB105	bolt	2
16	P-FB174	bolt	1
17	P-DR41	washer SS	1
18	P-DR64	washer SS	1
19	P-FN15	nut	1
20	P-G66	graphite gasket	1
21	P-R115	clamp SS	1
22	P-RPCK249	muffler repack kit	1
23	P-RKS662R350	muffler sleeve kit	1