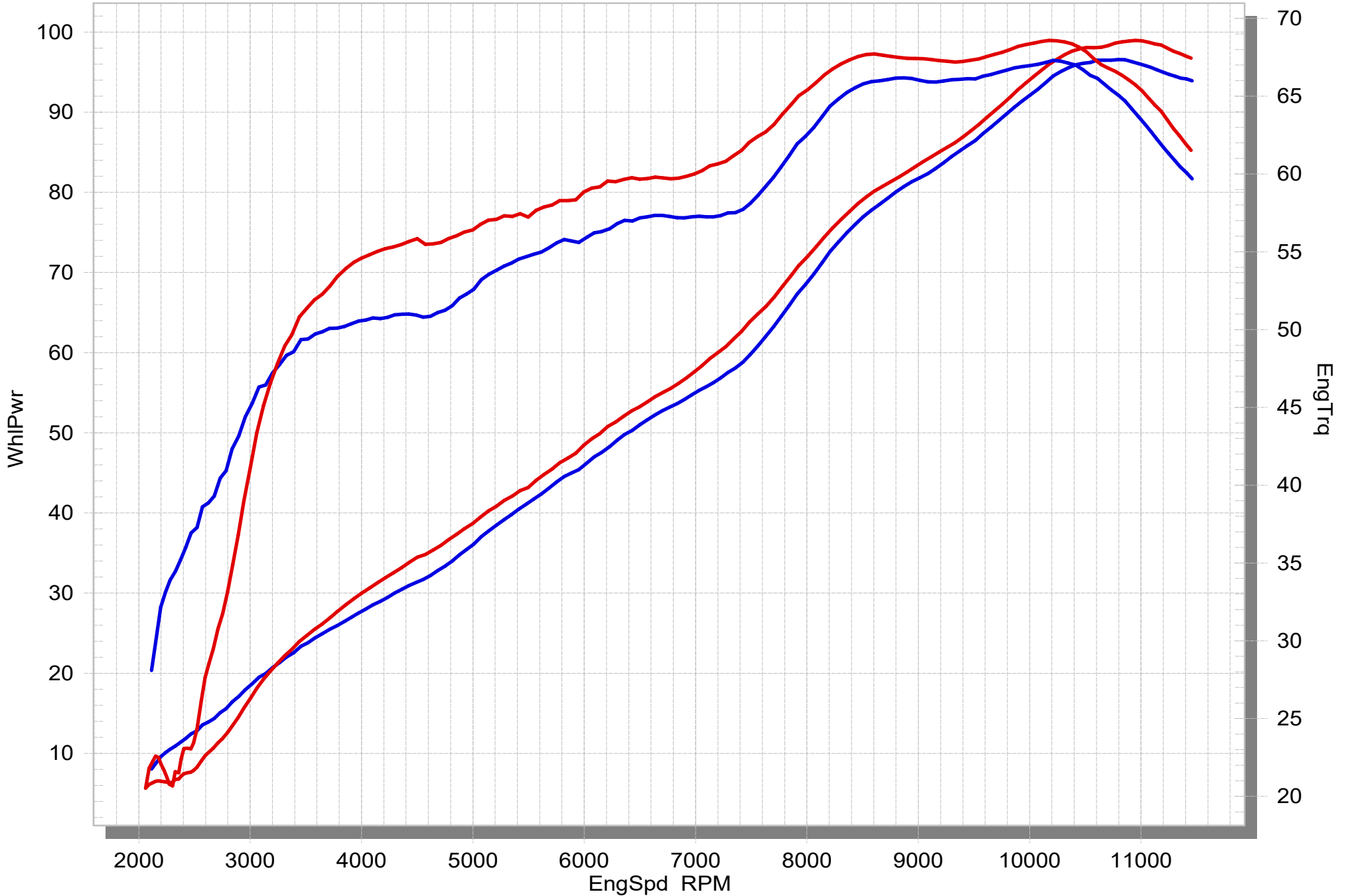


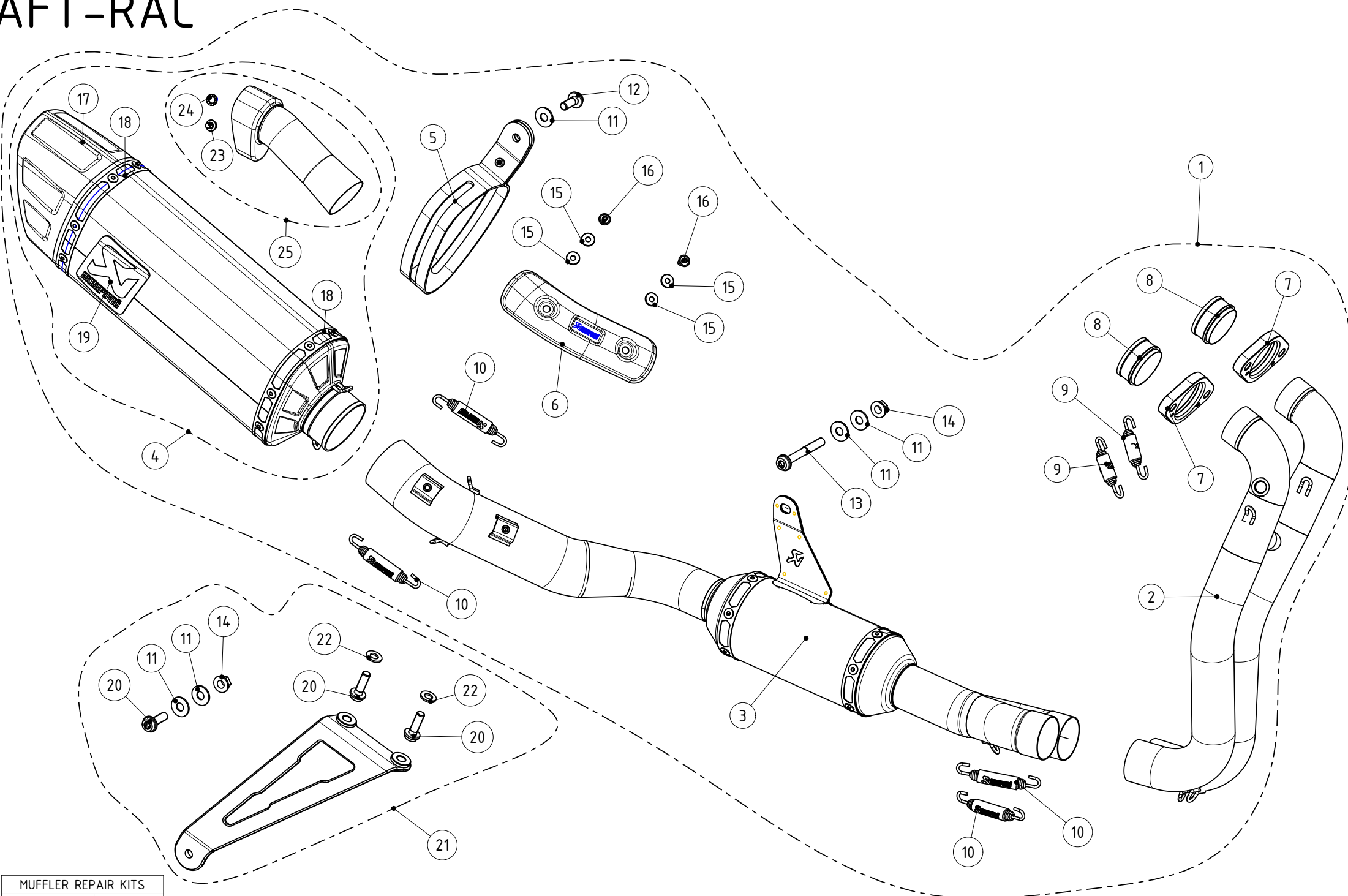
APRILIA RS 660 / TUONO 660

STOCK

RACIN LINE



AFT-RAC



| MUFFLER REPAIR KITS | |
|---------------------|----|
| REPACK | 26 |
| SLEEVE | 27 |

| No. | SalesCode | Description | Qty. |
|-----|----------------|--------------------------|------|
| 1 | S-A6R3-APLC | racng system | 1 |
| 2 | H-A6R2 | header SS | 1 |
| 3 | L-A6R3 | link pipe SS | 1 |
| 4 | M-APL00802C | muffler | 1 |
| 5 | P-MCCEE2X | muffler clamp | 1 |
| 6 | P-HSA6R1 | heat shield CA | 1 |
| 7 | P-FY4 | flange | 2 |
| 8 | P-85 | inner sleeve SS | 2 |
| 9 | P-S2/1 | spring | 2 |
| 10 | P-S1/2 | spring | 4 |
| 11 | P-DR86 | washer SS | 5 |
| 12 | P-FB136 | bolt | 1 |
| 13 | P-FB186 | bolt | 1 |
| 14 | P-FN12 | nut | 2 |
| 15 | P-DRH2/BAR316 | washer SS | 4 |
| 16 | P-FB194 | bolt | 2 |
| 17 | V-EC380 | end cap | 1 |
| 18 | P-TT90 | belt TI for CA sleeve | 2 |
| 19 | P-HST14AL | sticker | 1 |
| 20 | P-FB155 | bolt | 3 |
| 21 | P-MBA6R1 | muffler bracket optional | 1 |
| 22 | P-DR47 | washer SS | 2 |
| 23 | P-FB56 | bolt | 1 |
| 24 | P-DR18 | washer SS | 1 |
| 25 | V-TUV319 | noise insert SS | 1 |
| 26 | P-RPCK271 | muffler repack kit | 1 |
| 27 | P-RKS689APL280 | muffler sleeve kit | 1 |